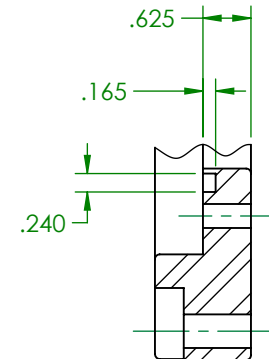
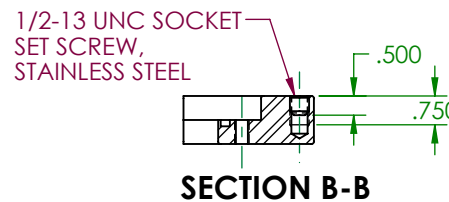


SCALE 1:8



NOTE:

- STANDARD ADAPTER PLATE IS FURNISHED AS SHOWN. IF AZIMUTH CORRECTION IS REQUIRED, IT MUST BE SPECIFIED WHEN ORDERED.
- MATERIAL-ASTM A572 GR 50. STAINLESS STEEL IS AVAILABLE AS AN OPTION; SPECIFY WHEN ORDERING.
- CARBON STEEL ADAPTER PLATES ARE ZINC PLATED PER ASTM B633 TYPE II CLASS I OR HIGHER.
- (6) 3/8-16 UNC X 2" LG STAINLESS STEEL HEX HEAD BOLTS WITH CEC LOCK WASHERS AND AN "O" RING ARE INCLUDED WITH THE ADAPTER PLATE.
- THIS PRODUCT IS CERTIFIED PER FAA ADVISORY CIRCULAR AC150/5345-42 (CURRENT REV).



DWN: DOUG F.	L-868 TYPE B ADAPTER PLATE FOR L-868C $\phi 15$ " BASE	
DATE: 8/10/2017		
SCALE: NTS	 MILLERBERND 622 6TH ST. SO. WINSTED, MN 55395	158A0125
SHEET 1 OF 1		