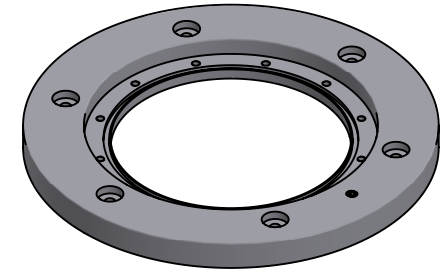
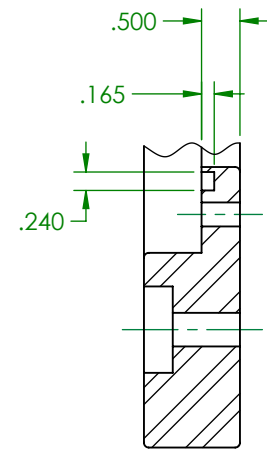


SECTION A-A



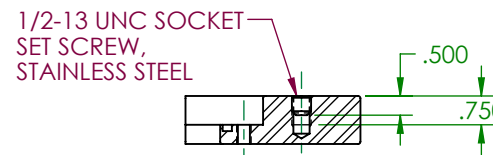
SCALE 1:8




DETAIL C
SCALE 2:5

NOTE:

1. STANDARD ADAPTER PLATE IS FURNISHED AS SHOWN. IF AZIMUTH CORRECTION IS REQUIRED, IT MUST BE SPECIFIED WHEN ORDERED.
2. MATERIAL-ASTM A572 GR 50. STAINLESS STEEL IS AVAILABLE AS AN OPTION; SPECIFY WHEN ORDERING.
3. CARBON STEEL ADAPTER PLATES ARE ZINC PLATED PER ASTM B633 TYPE II CLASS I OR HIGHER.
4. (6) 3/8-16 UNC X 2" LG STAINLESS STEEL HEX HEAD BOLTS WITH CEC LOCK WASHERS AND AN "O" RING ARE INCLUDED WITH THE ADAPTER PLATE.
5. THIS PRODUCT IS CERTIFIED PER FAA ADVISORY CIRCULAR AC150/5345-42 (CURRENT REV).



SECTION B-B

DWN: DOUG F.	L-868 TYPE B ADAPTER PLATE		 622 6TH ST. SO. WINSTED, MN 55395	178A0125
DATE: 8/10/2017				
SCALE: NTS				
SHEET 1 OF 1				